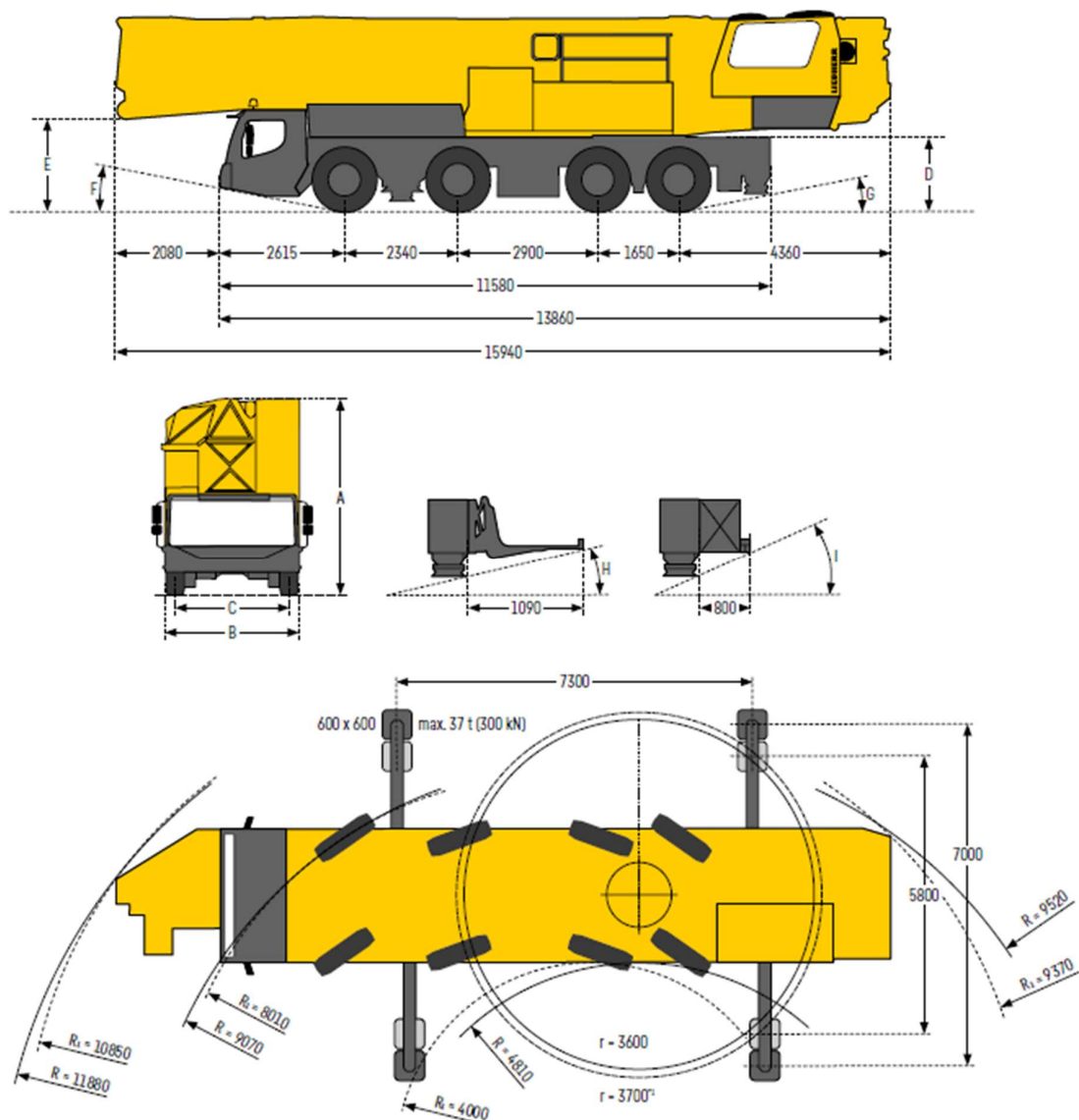



LIEBHERR MK88+



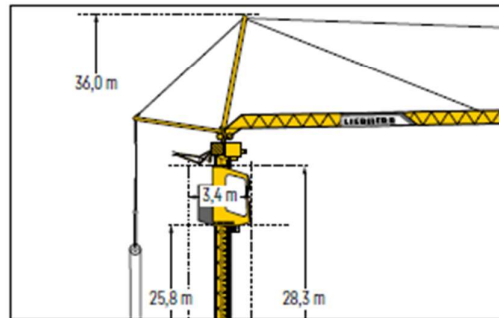
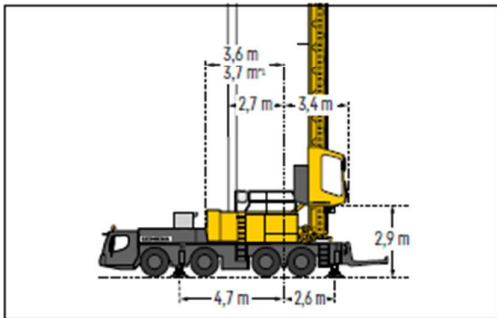
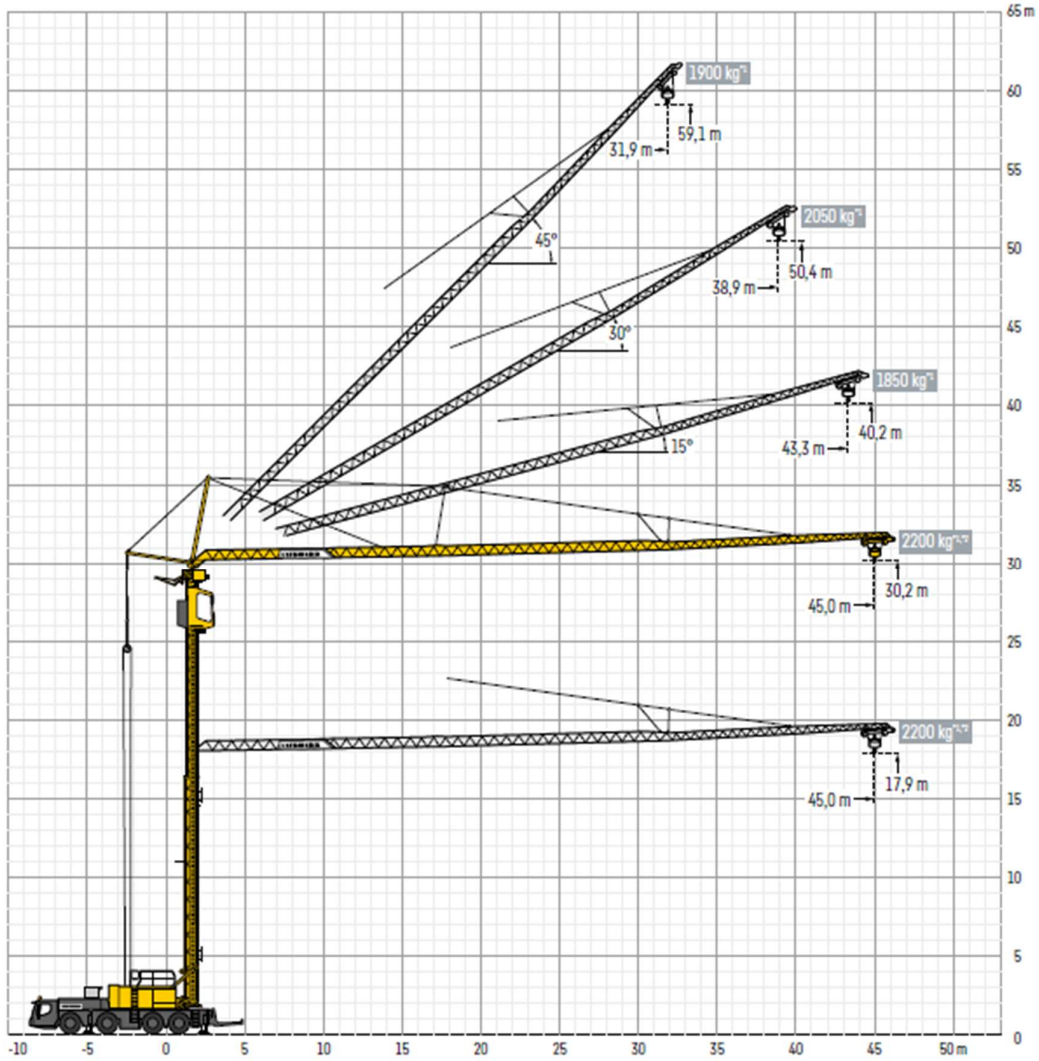
* Mit 2,0 t Zusatzballast - With 2.0 t additional ballast - Avec lest additionnel 2,0 t - Con 2,0 t de lastre adicional - Met 2,0 t extra ballast - С дополнительным балластом 2,0 т
R₀ - Allradlenkung - All-wheel steering - Direction toutes roues - Dirección en todos los ejes - Besturing van alle wielen - Рулевое управление всеми поворотными колесами

Maße - Dimensions - Encombrement - Dimensiones - Afmetingen - Габариты крана

	A	A ₁₀₀ *	B	C	D	E	F	G	H	I
385/95 R 25 (14.00 R 25)	4000	4000	2750	2360	1522	1890	12,0°	12,0°	9,3°	12,0°

* abgesenkt - lowered - abaissé - suspensión abajo - asvering afgelaten - шасси осажено

LIEBHERR MK88+



LIEBHERR MK88+

Heftabel giek 45 meter horizontaal	
Stempelbasis (m):	7,3 x 7,0 (breed)
Haakhoogte max. (m):	30,2
Inzet:	360° draaibaar
vlucht (m)	capaciteit (kg)
3,3	8000
10,0	8000
12,0	7370
14,0	6360
16,0	5580
18,0	4960
20,0	4460
22,0	4050
24,0	3700
26,0	3400
28,0	3140
30,0	2920
32,0	2720
34,0	2540
36,0	2390
38,0	2250
40,0	2120
42,0	2000
44,0	1900
45,0	1850

Heftabel giek 45 meter horizontaal	
Stempelbasis (m):	7,30 x 5,75 (smal)
Haakhoogte max. (m):	30,2
Inzet:	360° draaibaar
vlucht (m)	capaciteit (kg)
3,3	8000
10,0	8000
12,0	6480
14,0	5430
16,0	4660
18,0	4070
20,0	3610
22,0	3230
24,0	2920
26,0	2660
28,0	2430
30,0	2240
32,0	2070
34,0	1920
36,0	1790
38,0	1680
40,0	1570
42,0	1480
44,0	1390
45,0	1350

Heftabel giek 45 meter - 30° getopt	
Stempelbasis (m):	7,3 x 7,0 (breed)
Haakhoogte max. (m):	50,4
Inzet:	360° draaibaar
vlucht (m)	capaciteit (kg)
3,0	6000
10,0	6000
12,0	5260
14,0	4690
16,0	4220
18,0	3830
20,0	3500
22,0	3220
24,0	2980
26,0	2770
28,0	2580
30,0	2410
32,0	2260
34,0	2130
36,0	2010
38,9	1850

Heftabel giek 45 meter - 30° getopt	
Stempelbasis (m):	7,30 x 5,75 (smal)
Haakhoogte max. (m):	50,4
Inzet:	360° draaibaar
vlucht (m)	capaciteit (kg)
3,0	6000
10,0	5200
12,0	4580
14,0	4080
16,0	3670
18,0	3340
20,0	3050
22,0	2800
24,0	2590
26,0	2410
28,0	2240
30,0	2100
32,0	1970
34,0	1850
36,0	1740
38,9	1600