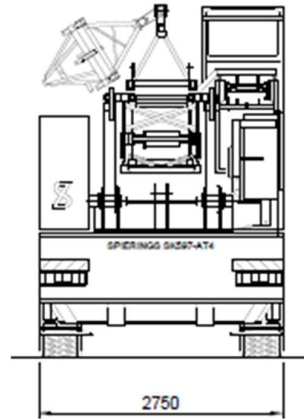
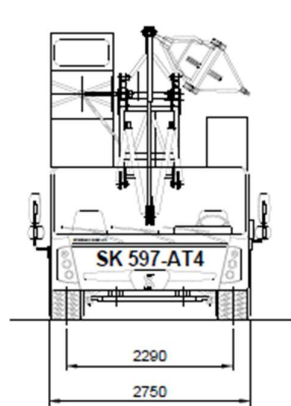
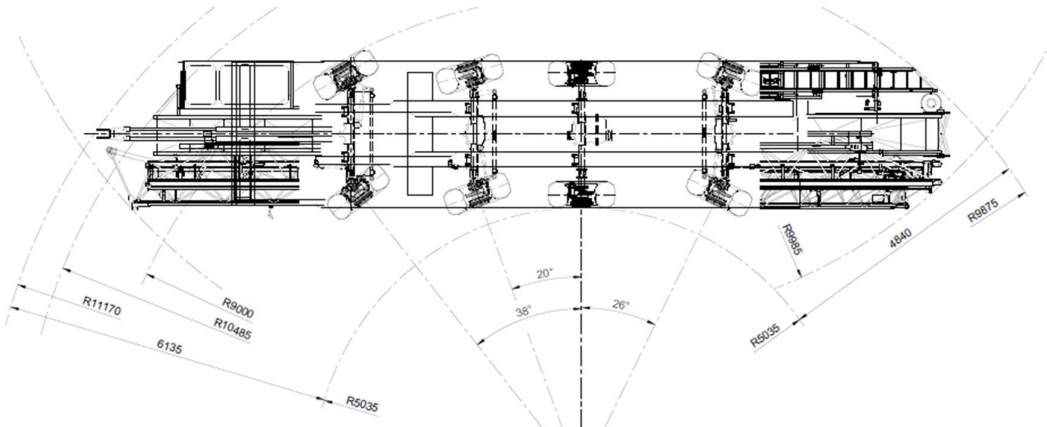
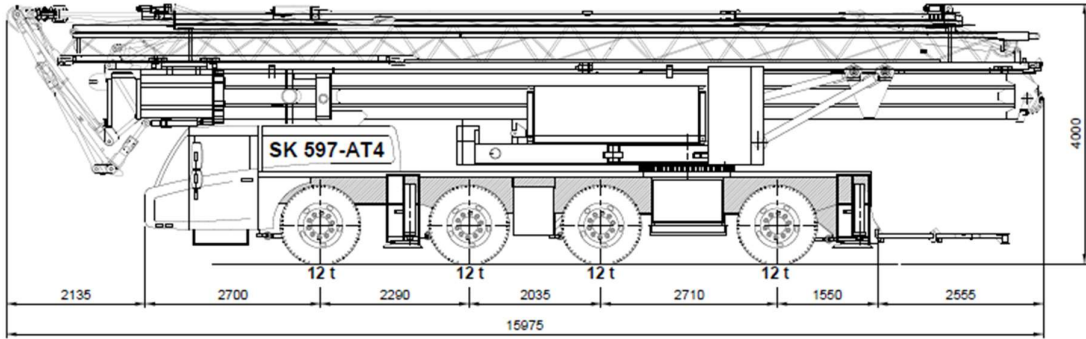
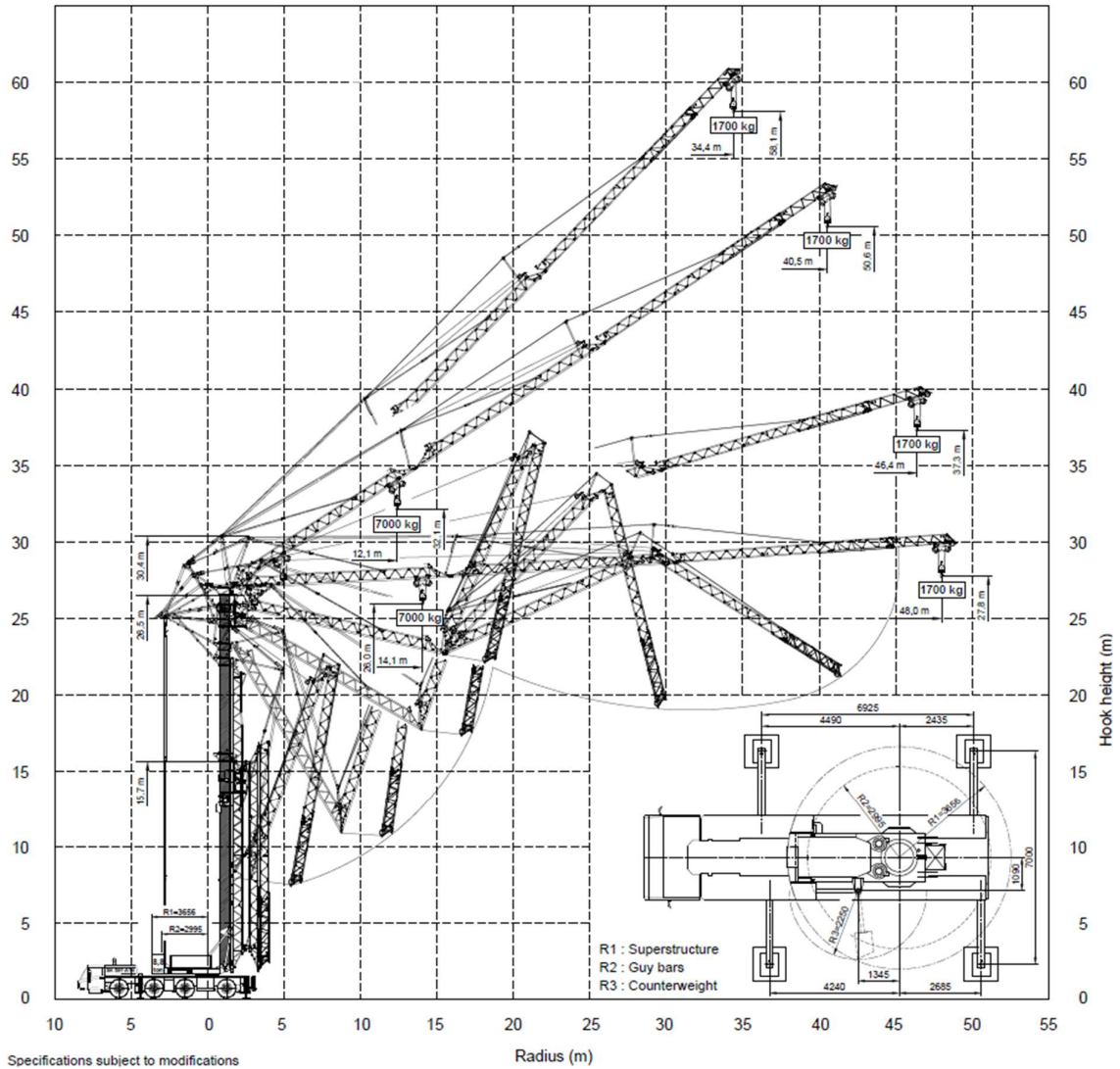


**SPIERINGS SK597-AT4**



**SPIERINGS SK597-AT4**

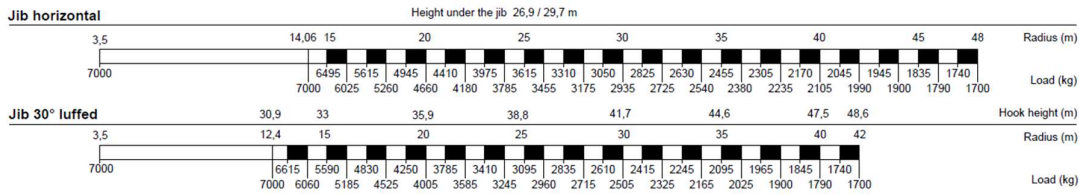


## SPIERINGS SK597-AT4

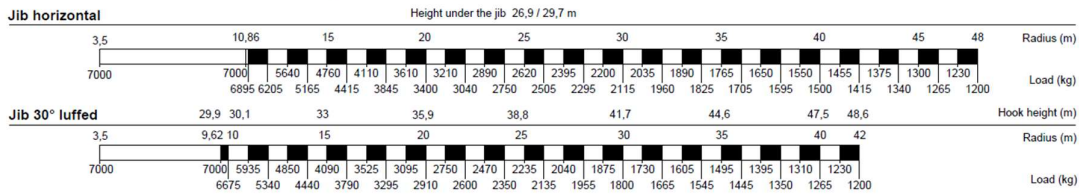
 <p><b>SPIERINGS MOBILE CRANES</b> Merwedestraat 15, Oss Holland</p>	<p><b>Make: SPIERINGS</b></p>	<p><b>Type: SK597-AT4</b></p>	
	<p><b>Serial number:</b></p>	<p><b>Year of construction: 2018</b></p>	

Operation allowed up to wind force 7 Bf (14 m/sec).  
The crane should be folded in at wind force 9 Bf (21 m/sec) or when not in use for a longer period  
Counterweight crane: 8855 kg.  
Max. outrigger force: 360 kN.

### Lifting chart outrigger support base 6,925 m x 7,0 m



### Lifting chart outrigger support base 6,925 m x 5,85 m



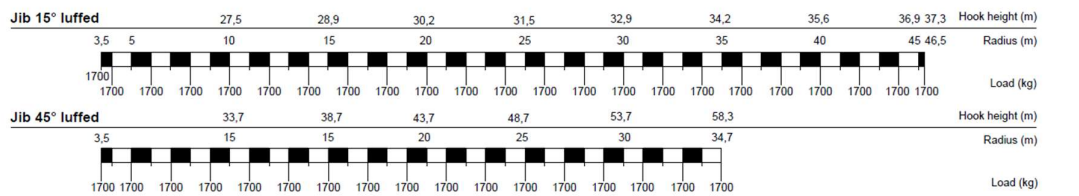
Specifications subject to modifications

84-00597101

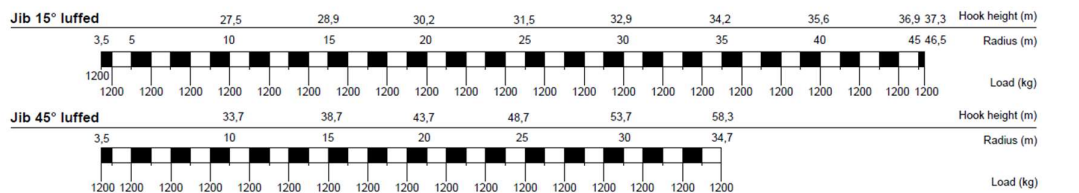
 <p><b>SPIERINGS MOBILE CRANES</b> Merwedestraat 15, Oss Holland</p>	<p><b>Make: SPIERINGS</b></p>	<p><b>Type: SK597-AT4</b></p>	
	<p><b>Serial number:</b></p>	<p><b>Year of construction: 2018</b></p>	

Operation allowed up to wind force 7 Bf (14 m/sec).  
The crane should be folded in at wind force 9 Bf (21 m/sec) or when not in use for a longer period  
Counterweight crane: 8855 kg.  
Max. outrigger force: 360 kN.

### Lifting chart outrigger support base 6,925 m x 7,0 m



### Lifting chart outrigger support base 6,925 m x 5,85 m



Specifications subject to modifications

84-00597101